

# Y system respiradol

## The respiratory system

Mae'r system resbiradol yn gwneud 2 swydd

The respiratory system has 2 functions



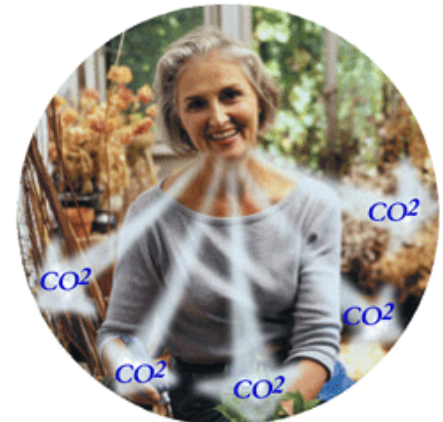
Rhoi ocsigen i fewn i'r gwaed

Gets oxygen into the blood



Cael gwared o garbon deuocsid o'r gwaed.

Gets rid of Carbon dioxide from the blood



Ceudod y trwyn

Nasal cavity

1

Ceg Mouth

2

Laryncs

Larynx

3

Ysgyfaint

Lung

4

Broncws Dde

Right Bronchus

5

Llengig

Diaphragm

6

7

Ffaryncs

Pharynx

8

Tracea

Trachea

9

Broncws chwith

Left bronchus

10

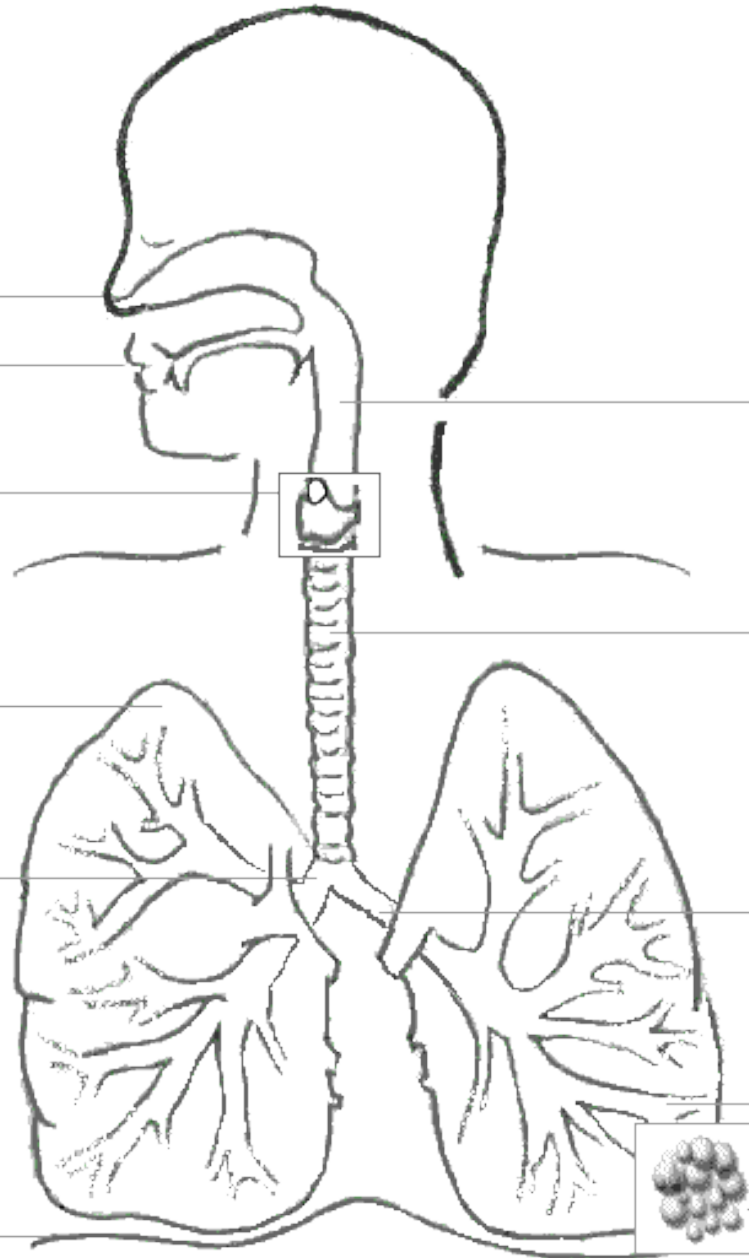
Bronciol

Bronchiole

11

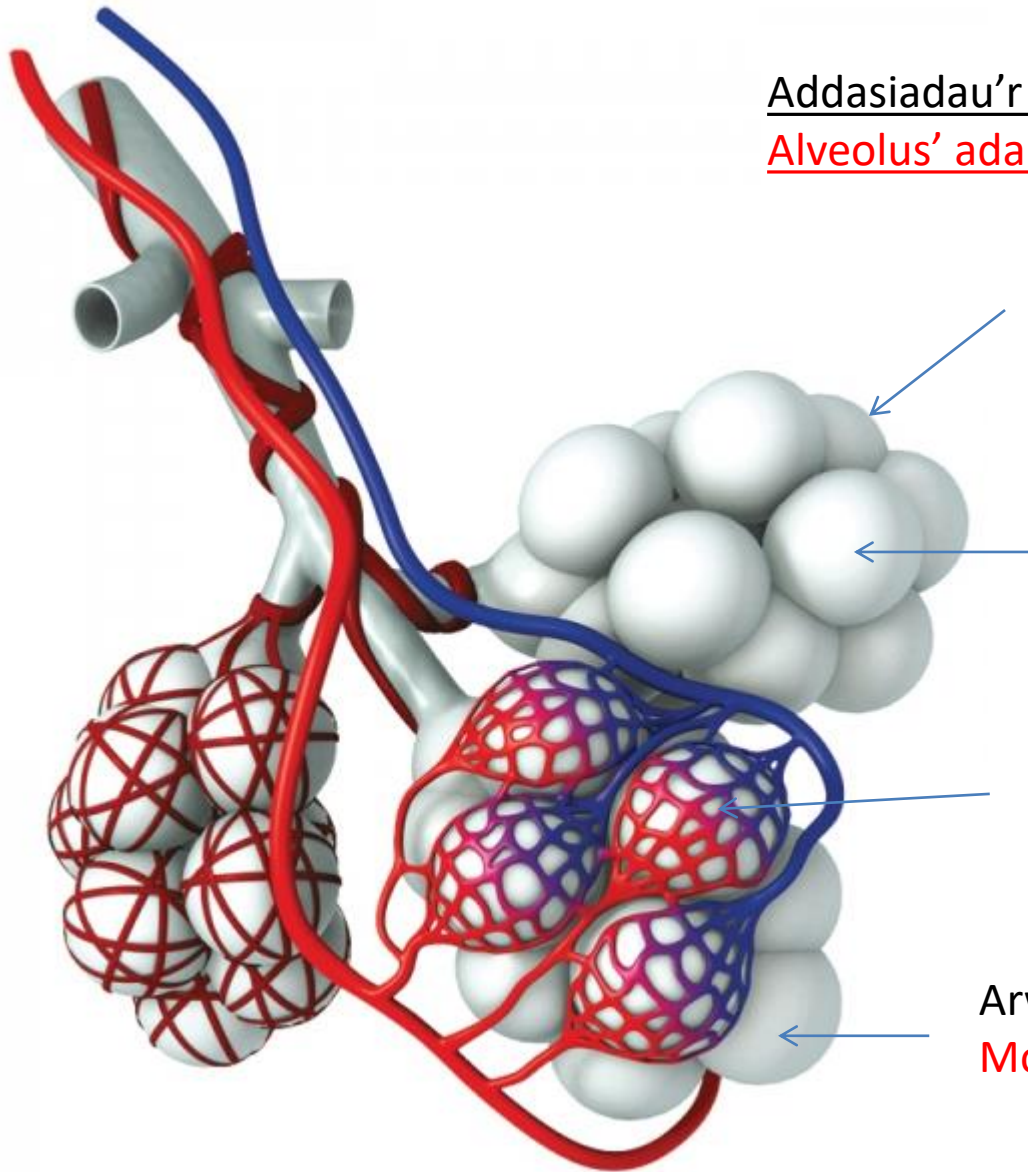
Alfeolynnau

Alveoli



# Alfeolws **Alveolus**

Addasiadau'r alfeolws ar gyfer cyfnewid nwyon  
Alveolus' adaptations for gas exchange

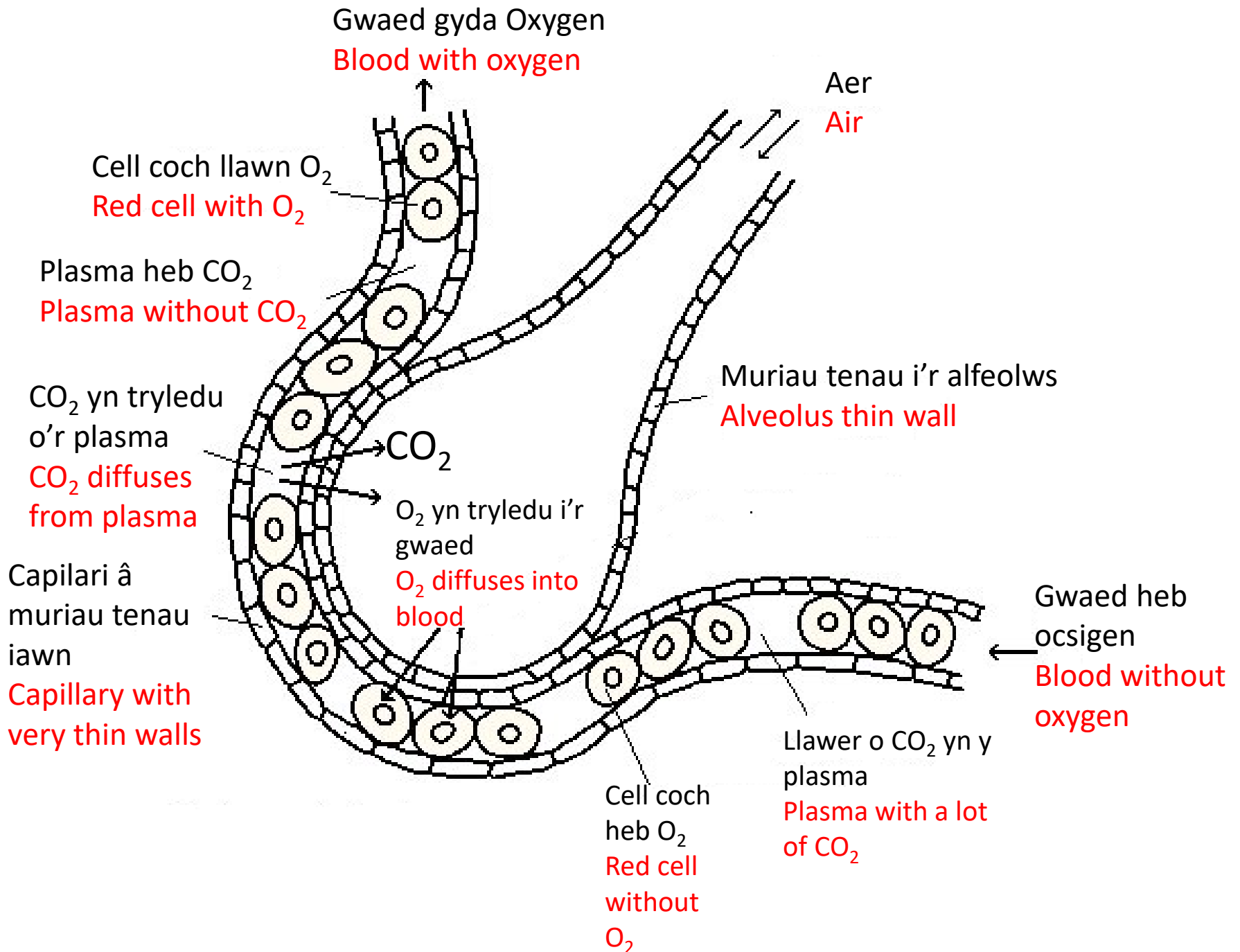


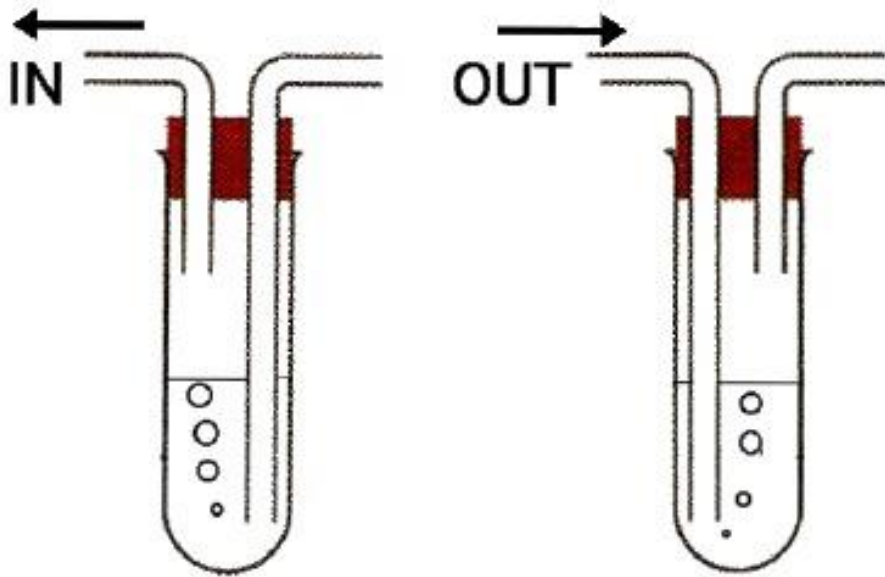
Muriau tenau iawn  
Very thin walls

Arwyneb arwynebedd mawr  
Large surface area

Rhwydwaith o gapilariau  
Network of capillaries

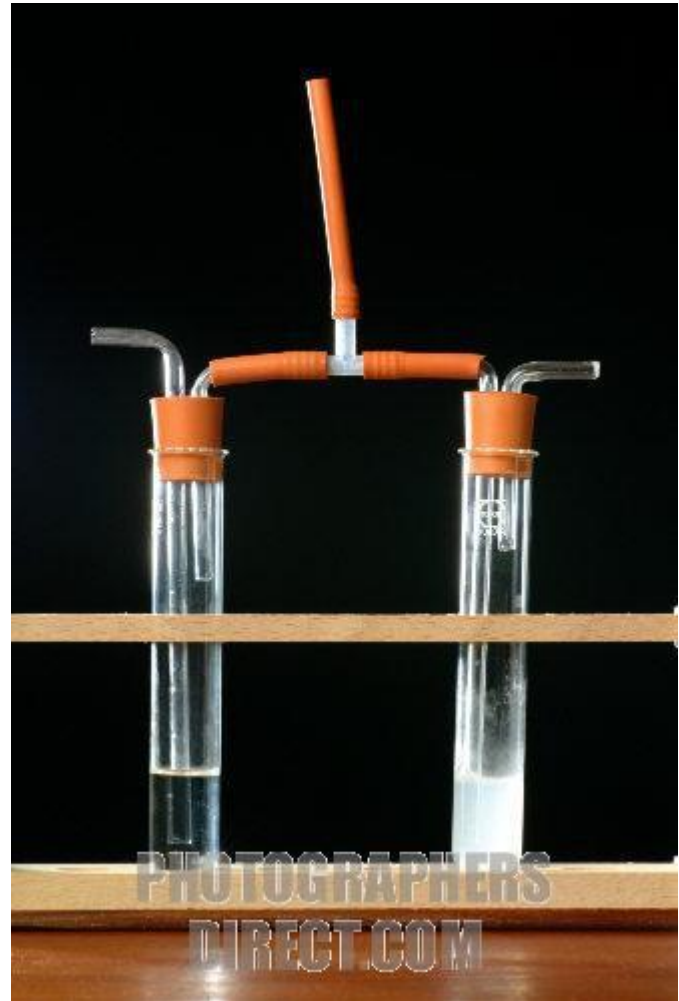
Arwyneb mewnol llaith  
Moist internal surface





Mae'r dwr calch yn troi yn  
llaethog pan fo Carbon  
deuocsid yn bresennol

The limewater turns milky  
when Carbon dioxide is  
present



# Cymharu anadl i fewn a allan

## Comparing inhaled and exhaled air

	Anadl i mewn Breath in	Anadl allan Breath out	Rheswm Reason
Ocsigen Oxygen	21%	17%	Mae'r corff yn amsugno ocsigen The body absorbs oxygen
Carbon deuocsid Carbon dioxide	0.03%	4%	Mae'r corff yn cynhyrchu Carbon deuocsid The body produces carbon dioxide
Nitrogen	78%	78%	Nid yw'r corff yn defnyddio Nitrogen The body does not use Nitrogen
Anwedd dwr Water vapour	Isel Low	Uwch Higher	Mae dwr yn anweddu o arwyneb yr alfeolws Water evaporates from alveoli
Tymheredd Temperature	Isel Low	Uwch Higher	Mae'r aer yn cael ei gynhesu Air is warmed up

anadlu